

Maibec® Woven Corners Installation Guide

Read this entire guide before installing your woven corners. For proper installation, you must understand and follow all requirements and steps correctly. For any questions, please contact Maibec's technical service toll-free at 1 800 363-1930, Monday to Friday from 8:30 a.m. to 4:30 p.m. (Eastern Time).

IMPORTANT: COMPLIANCE WITH MAIBEC'S INSTALLATION, STORAGE AND MAINTENANCE REQUIREMENTS, AND WITH ALL APPLICABLE BUILDING CODES IS MANDATORY. PROBLEMS CAUSED BY FAILURE TO COMPLY WITH THESE REQUIREMENTS AND CODES MAY NOT BE COVERED BY THE APPLICABLE WARRANTIES.

Factory-stained white cedar woven corners can only be installed to exterior wall surfaces.

All dimensions in this document are given in inches.

1. STORAGE

- Store the shingle siding in an unheated, dry and ventilated area.
- Leave woven corner boxes on pallet. Do not store the material in direct contact with the ground or a cement floor.
- Always cover the uninstalled material after a day's work.

2. DESCRIPTION

- **The outside and inside woven corners are made of two shingles bound by reinforced vinyl tape.**
- 24 outside or inside corners per box, 10 linear feet/box at 5" exposure. **One STARTER CORNER per box. The exterior starter corner is identified with a V cut in the tapered edge and a green tape at the base. The interior starter corner only has a green tape at the base.**
- Equal amount of narrow shingle corners (3 1/2" - 5") and wide shingle corners (6" - 8") in every box. Stagger shingle widths making sure that joints aren't aligned over subsequent courses.
- **The exposure for shingles is 5"** but can vary between 1/8" to 1/4" depending on the height of the wall and the window positions.
- If you trim a woven corner, apply **touch-up stain** on all cuts.

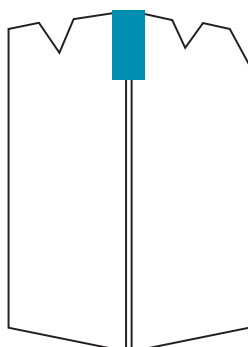
OUTSIDE CORNER

- One shingle is notched in the upper corner. **THIS IS THE OVERLAP SHINGLE.**
- Reversible

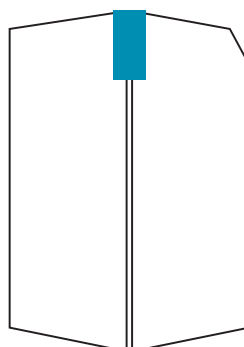
INSIDE CORNER

- This corner **DOES NOT** have a notch, as both sides can overlap.

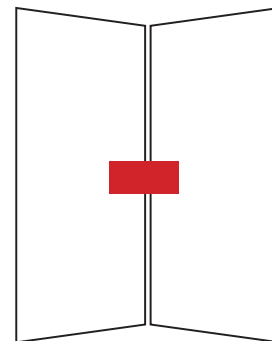
FIGURE 1



EXTERIOR
STARTER CORNER



OUTSIDE CORNER



INSIDE CORNER

3. THE OUTSIDE CORNER – INSTALLATION

THE FIRST ROW

1. Use starter corner over undercourse shingles.
2. Set corner on straight edge (ex: furring strip).
3. Install NON notched shingle first, make sure butt is always flush.
4. Then install notched shingle, overlapping the first shingle.
5. Insert stainless steel finish nail in the bottom of the corner to solidify.

FIGURE 2

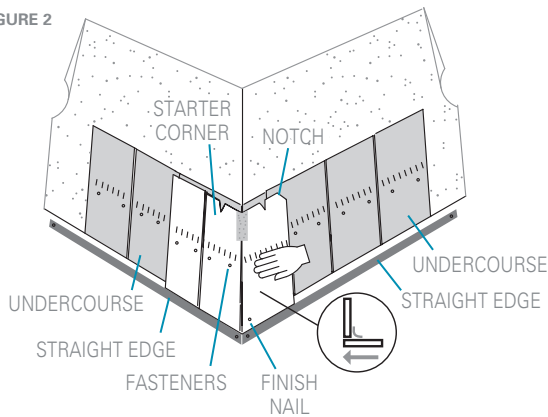
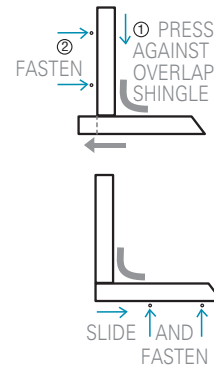


FIGURE 3



TIP

Step 1 - Place the overlap shingle slightly beyond the corner, then butt the opposite side shingle into it to properly fix it in place.

Step 2 - Fasten it, then place the overlap shingle into its proper position for fastening.

THE SUBSEQUENT ROWS

1. Use appropriate size corner to stagger shingle edges from first row.
2. Repeat steps from first row.

IMPORTANT: The corner is reversible. Always install the notched shingle as the overlap of the corner.

FIGURE 4

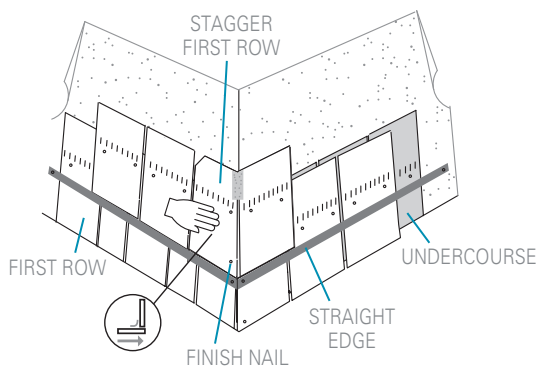
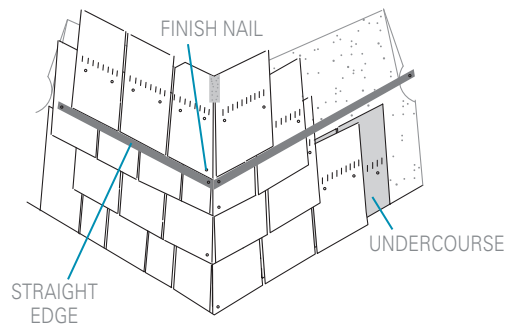


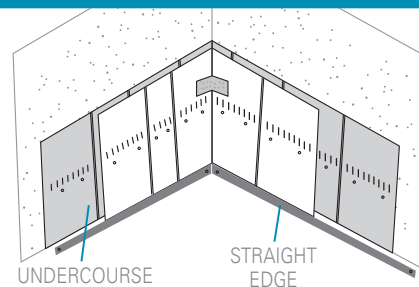
FIGURE 5



4. THE INSIDE CORNER – INSTALLATION

1. Install starter corner over undercourse shingles.
2. Overlap shingle as desired, fasten.
3. On subsequent rows, select corner to stagger corner edges from previous row.
4. Overlap shingle opposite of the previous row, fasten.

FIGURE 6



IMPORTANT: COMPLIANCE WITH MAIBEC'S INSTALLATION, STORAGE AND MAINTENANCE REQUIREMENTS, AND WITH BUILDING CODES APPLICABLE IN YOUR REGION IS MANDATORY. PROBLEMS CAUSED BY FAILURE TO COMPLY WITH THESE REQUIREMENTS AND CODES MAY NOT BE COVERED UNDER APPLICABLE WARRANTIES.